

Penetrating water repellent agent for concrete

Magical Repeller

Magical Repeller is a material applied to the surface of concrete to improve the durability of the structure and extend its service life by preventing water from penetrating into the concrete (water absorption prevention effect).



An examples of concrete structure



Magical Repeller

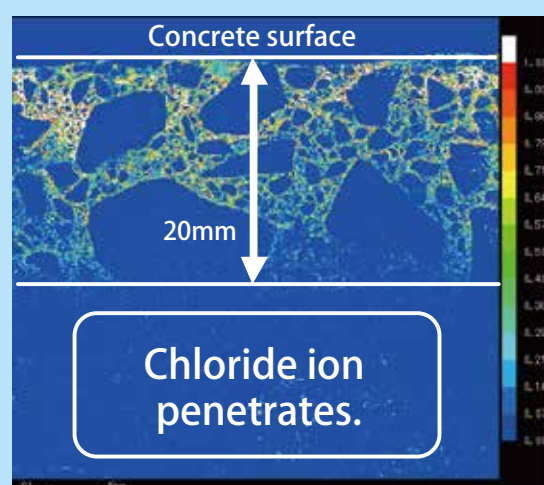


Water absorption prevention effect

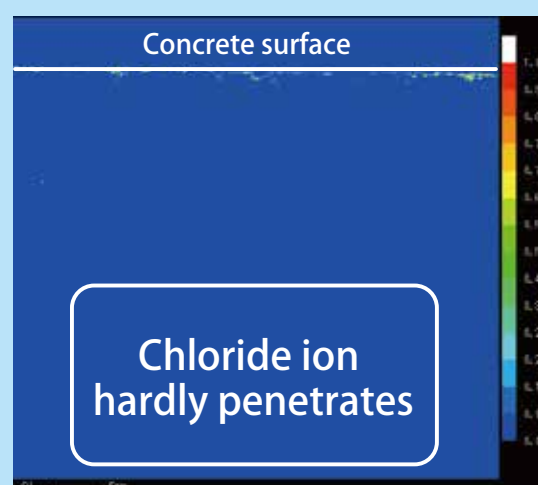
Effect and mechanism

A water repellent layer is formed by a network consisting of two different sizes of silicone on near the concrete surface.

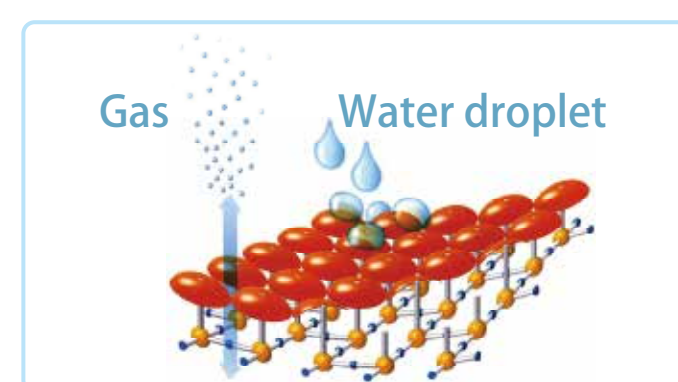
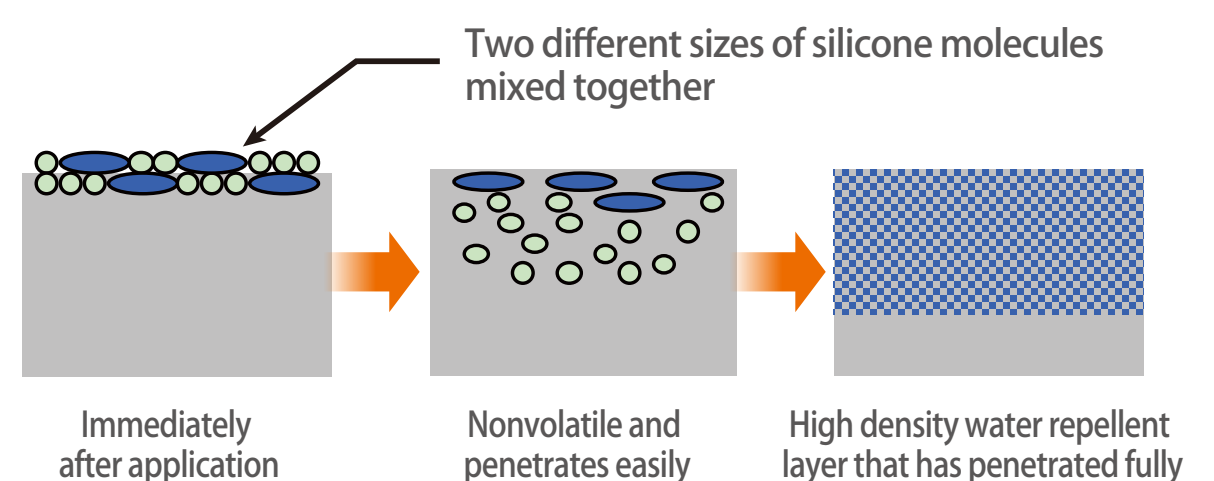
An example of inhibitory effect of chloride ion by Magical Repeller.
(Continuous test of birne spraying and drying brine four times a day for 5 months)



Without application of Magical Repeller



With application of Magical Repeller



Features

Performance

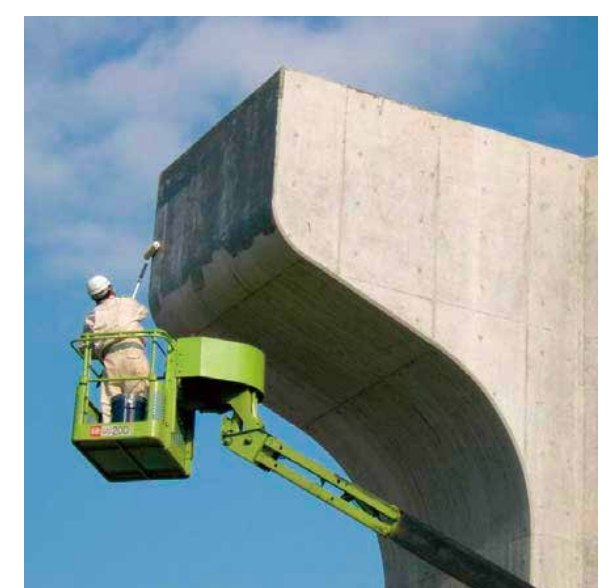
- The effects of Magical Repeller can be expected to continue as long as the water repellent layer is not physically removed, such as by friction.
- The material exhibits excellent durability, such as resistance to ultraviolet rays and that to decomposition by alkali in concrete.
- Magical Repeller shows full water repellent effect in just one application.
- After application, it becomes colorless transparent.

Construction

- It is applied by using airless spraying or roller.
- The paste-like material seldom shows scattering and dripping, leading to good workability.
- Even when applied overhead or vertically, it penetrates smoothly as in the case of horizontal application.

Environment

- Since is does not use organic solvents, the work environment is greatly improved and it is environmentally friendly material.



Application of Magical Repeller by using a roller